

SPRINKLER CAP SYSTEM

To satisfy urban demands in sweltering weather conditions, optional sprinkler caps can be activated and properly regulated, only by using the Sigelock Sprinkler Cap System and Wrench. The Sigelock Sprinkler Cap System eliminates the danger of dangerous and life threatening situations while allowing our children to cool off in the blistering heat.

In order to purchase this Sprinkler Cap System you must be a registered municipal purchaser or fire department official.

**Sprinkler Cap is sold in place of Pumper Nozzle Cap
*Purchase of additional master keys may be required



EXTENSION KITS



EXT. LENGTH

6"
1'
1' 6"
2'
2' 6"
3'
3' 6"
4'

ITEM #	PART #	DESCRIPTION	QUANTITY
43, 44, 47	SH2604-5-6	Extension Standpipe - Length: As per order	(1)
94	SH2607	Extension Stem - Length: As per order	(1)
92	SH2011	Extension Flange	(2)
93	SH2602-2	Extension Coupling	(1)
42	OR7446	Standpipe O-ring	(1)
95	BT2601	Extension Bolt	(6)
40	NT2001	Safety Flange Nut	(6)
59	PN2601	Self Locking Cotter Pin	(2)

INLET CONNECTION

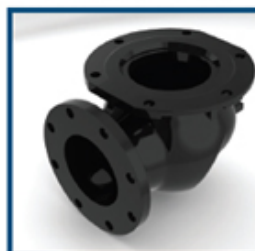
MECHANICAL JOINT



TYTON JOINT



FLANGED JOINT



PLAIN END

